



## WHITEHAVEN CHPP – MONTHLY MONITORING SUMMARY

### Site Information

EPL No: 3637

EPA Website Link: <http://www.epa.nsw.gov.au/prpoeoapp/ViewPOEOLicence.aspx?DOCID=33514&SYSUID=1&LICID=3637>

Licensee: Whitehaven Coal Mining Limited

Licensee Address: Boggabri Road, Gunnedah NSW 2380

EPL Monitoring Points: See Figure 1 below

Sampling Period: December 2024

Obtained Date: 14<sup>th</sup> January 2025

Publication Date: 16<sup>th</sup> January 2025

**Table 1 - No Pollutant Limits Apply**

EPL ID	Pollutant	Units of Measure	Monitoring Frequency	No. of Measurements for the Month	Date Sampled	Date Obtained	Min Value	Mean Value	Median Value	Max or Only Value
3	Solid Particles	g/m <sup>2</sup> /month	Continuous	1	06/12/2024	13/01/2025	-	-	-	2.3
11	PM <sub>10</sub> Kendo	µg/m <sup>3</sup>	Every 6 days	6	01/12/2024 07/12/2024 13/12/2024 19/12/2024 25/12/2024 31/12/2024	14/01/2025 (Last sampled received)	7.2	12.96	12.15	24.4
12	PM <sub>10</sub> Olive View	µg/m <sup>3</sup>	Every 6 days	6	01/12/2024 07/12/2024 13/12/2024 19/12/2024 25/12/2024 31/12/2024	14/01/2025 (Last sampled received)	10.4	15.32	13.65	26.6
6	Conductivity	µs/cm	Each overflow event	0	-	-	-	-	-	-
	Oil and Grease	mg/L					-	-	-	-
	Total Organic Carbon	mg/L					-	-	-	-
	Total Suspended Solids	mg/L					-	-	-	-
	pH	pH					-	-	-	-
7	Conductivity	µs/cm	Quarterly	-	-	-	-	-	-	-
	Oil and Grease	mg/L					-	-	-	-



### WHITEHAVEN CHPP – MONTHLY MONITORING SUMMARY

EPL ID	Pollutant	Units of Measure	Monitoring Frequency	No. of Measurements for the Month	Date Sampled	Date Obtained	Min Value	Mean Value	Median Value	Max or Only Value
	Total Organic Carbon	mg/L					-	-	-	-
	Total Suspended Solids	mg/L					-	-	-	-
	pH	pH					-	-	-	-

Table 2 – Groundwater Monitoring (Quarterly – No Limits apply)

EPL ID	Pollutant	Units of Measure	Monitoring Frequency	No. of Samples for the Period	Date Sampled	Date Obtained	Min Value	Mean Value	Median Value	Max or Only Value
8	Ammonia	mg/L	Quarterly (P1)	1	04/12/2024	12/12/2024	-	-	-	<0.01
	Bicarbonate	mg/L					-	-	-	1310
	Calcium	mg/L					-	-	-	65
	Chloride	mg/L					-	-	-	2320
	Conductivity	µs/cm					-	-	-	10200
	Lead	mg/L					-	-	-	<0.001
	Magnesium	mg/L					-	-	-	185
	Nitrate	mg/L					-	-	-	0.44
	Potassium	mg/L					-	-	-	26
	Sodium	mg/L					-	-	-	2090
	Standing Water Level	m					-	-	-	6.58
	Sulphate	mg/L					-	-	-	1560
pH	pH	-	-	-	7.82					
9	Ammonia	mg/L	Quarterly (P2)	1	04/12/2024	12/12/2024	-	-	-	2.04
	Bicarbonate	mg/L					-	-	-	910
	Calcium	mg/L					-	-	-	284



### WHITEHAVEN CHPP – MONTHLY MONITORING SUMMARY

EPL ID	Pollutant	Units of Measure	Monitoring Frequency	No. of Samples for the Period	Date Sampled	Date Obtained	Min Value	Mean Value	Median Value	Max or Only Value
	Chloride	mg/L					-	-	-	1080
	Conductivity	µs/cm					-	-	-	5950
	Lead	mg/L					-	-	-	<0.001
	Magnesium	mg/L					-	-	-	222
	Nitrate	mg/L					-	-	-	0.11
	Potassium	mg/L					-	-	-	115
	Sodium	mg/L					-	-	-	670
	Standing Water Level	M					-	-	-	1.80
	Sulphate	mg/L					-	-	-	620
	pH	pH					-	-	-	6.97
10	Ammonia	mg/L	Quarterly (P3)	1	04/12/2024	12/12/2024	-	-	-	0.23
	Bicarbonate	mg/L					-	-	-	748
	Calcium	mg/L					-	-	-	248
	Chloride	mg/L					-	-	-	1390
	Conductivity	µs/cm					-	-	-	6030
	Lead	mg/L					-	-	-	<0.001
	Magnesium	mg/L					-	-	-	216
	Nitrate	mg/L					-	-	-	12.9
	Potassium	mg/L					-	-	-	59
	Sodium	mg/L					-	-	-	690
	Standing Water Level	M					-	-	-	1.24
	Sulphate	mg/L					-	-	-	290
	pH	pH					-	-	-	6.90



## WHITEHAVEN CHPP – MONTHLY MONITORING SUMMARY

**Table 3 – Monitoring (Quarterly Noise – Limits Apply)**

EPL ID	Date	Measurement Period	Measured levels – CHPP – dB(A)		Limit(s)- dB(A)	Wind speed (m/s)	Observations	(Potential) Non-compliance /breach
			LA1, 1 minute	LAeq, 15 minute				
N1	02/12/2024	15 mins day	-	NM	35	0.9	operations faintly audible Traffic 40-44, Animals 48-54 Birds 50-69	No
	02/12/2024	15 mins evening	-	34	35	0.4	Insects 42-45, Traffic 38-42, Animals 52-55 Train horn 44-55 Dozer operations 33 General site activity 30-32	
		15 mins night	-	28	35	1.2	Traffic 40-50, Insects 42-47, General site activity 25-30, Dozer operations 30-32	
		1 min night	32	-	45			

**Notes:**

**dB(A):** The overall level of a sound is usually expressed in terms of dBA, which is measured using a sound level meter with an “A-weighting” filter. This is an electronic filter having a frequency response corresponding approximately to that of human hearing.

**LAeq, 15 minute:** The A-weighted equivalent noise level (basically the average noise level). It is defined as the steady sound level that contains the same amount of acoustical energy as the corresponding time-varying sound, in this instance over a period of 15 minutes.

**LA1, 1 minute:** The noise level exceeded for 1% of the 15 minute interval.

**I/A:** When site noise is noted as inaudible (I/A), no site noise was audible at the monitoring location.

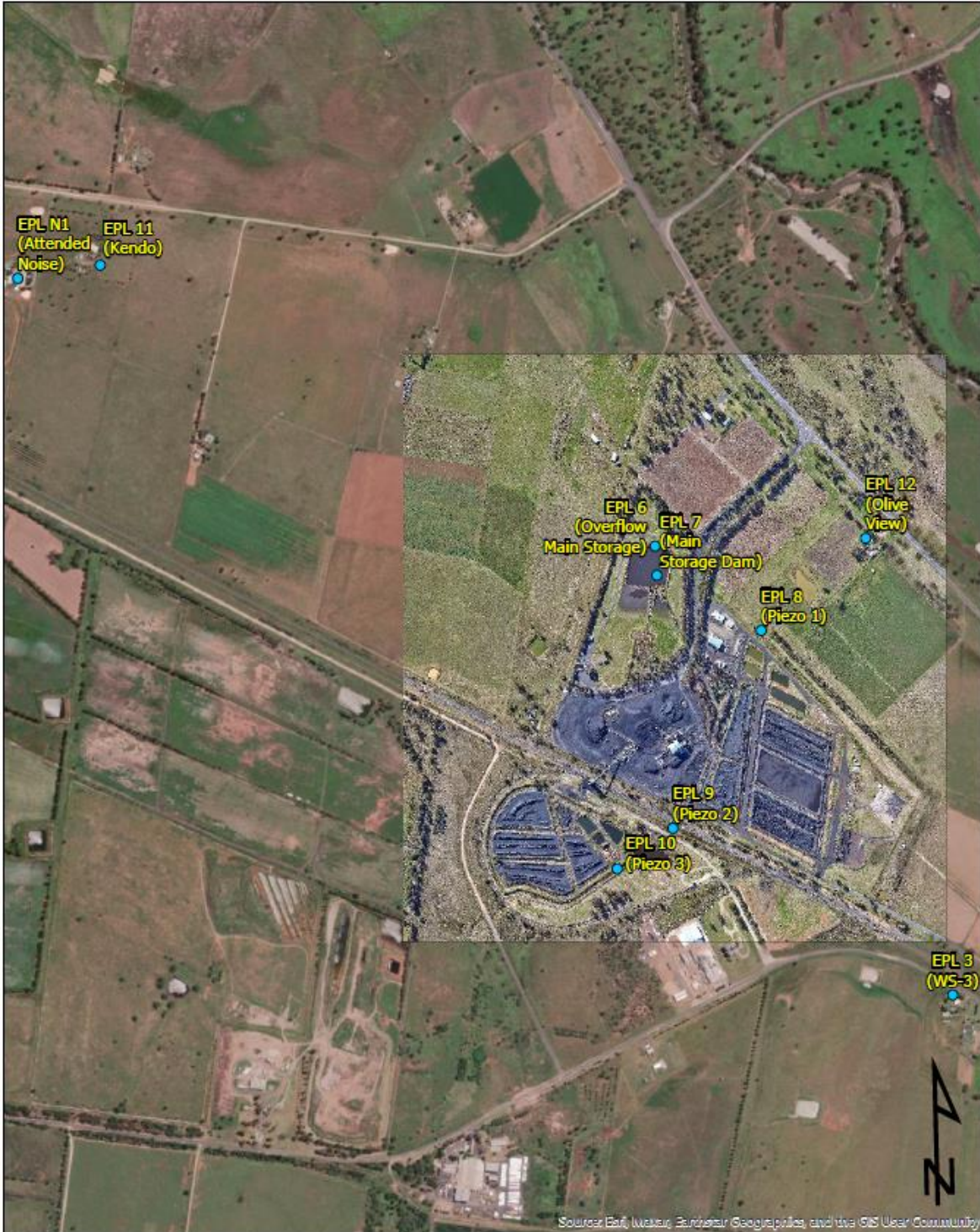
**Not Measurable (NM):** indicates that some site noise was audible, but indeterminate due to one of the following reasons:

- site noise levels were insignificant and unlikely, in many cases, to be even noticed; or
- site noise levels were masked by another relatively loud noise source, but were estimated to be less than LAeq 30 dB, which is insignificant in terms of any applicable criterion.



# WHITEHAVEN COAL

## WHITEHAVEN CHPP – MONTHLY MONITORING SUMMARY



	<p><b>Figure 1</b> <b>Gunnedah CHPP EPL3637</b> <b>Monitoring Locations</b></p>	<p>0 250 500 Meters</p>
<p>Datum MGA2020 Zone 56 Author O.Hulbert Image Nov-22 Date Jan-23 Size/Scale 1:13000</p>		<p>● CHPP_EPL_Sites_Feb23</p>